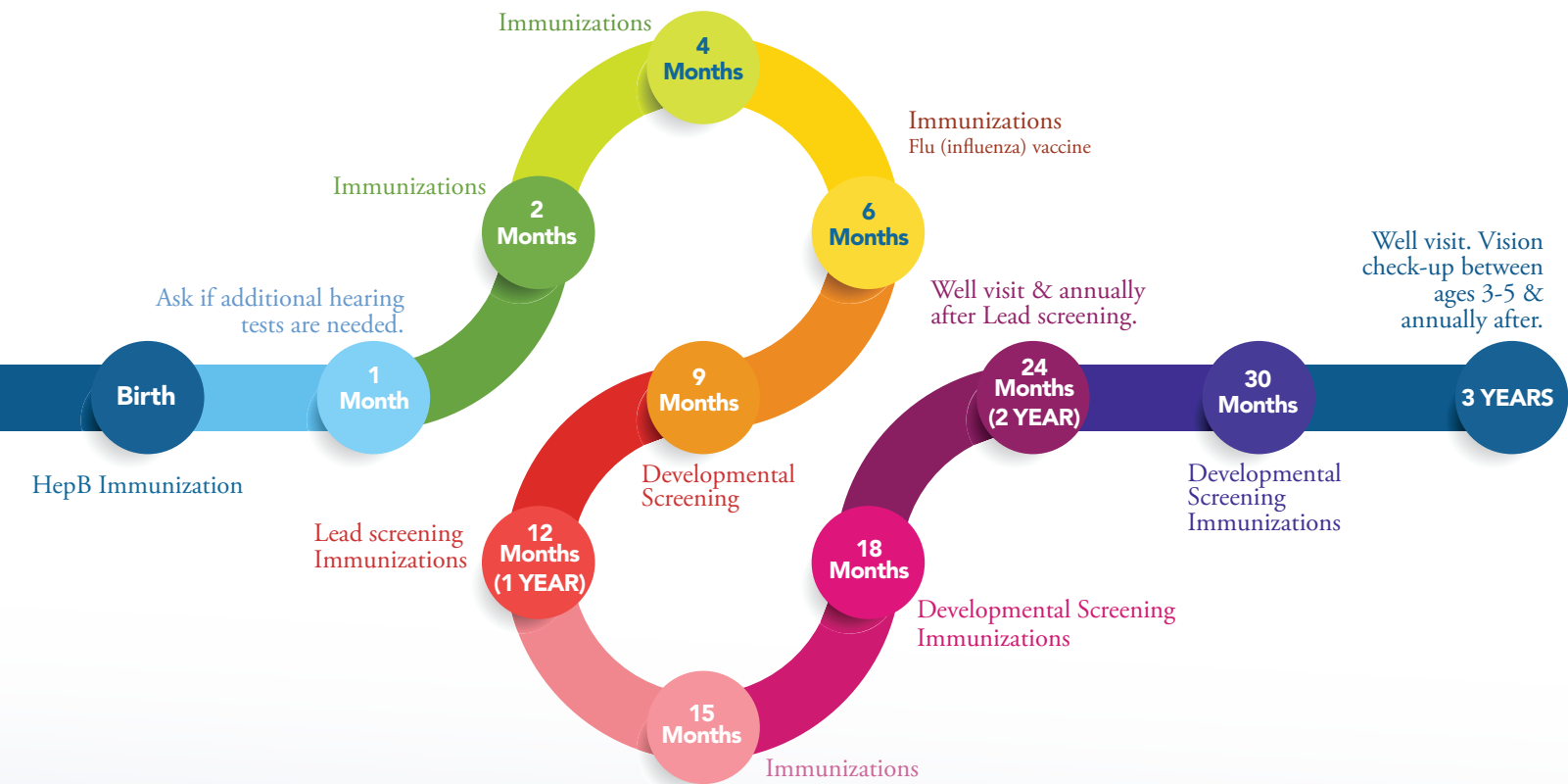


# Well-Child Check-Ups

## Birth to Three Years | Well Visit and Immunization Road Map



Vaccine	Birth	1 month	2 months	4 months	6 months	12 months	15 months	18 months	19-23 months	2-3 years
<b>HepB (Hepatitis B)</b>	1 dose	1 dose			1 dose					
<b>RV (Rotavirus)</b>			1 dose	1 dose	1 dose					
<b>DTap (Tetanus, Diphtheria, Pertussis)</b>			1 dose	1 dose	1 dose		1 dose			
<b>Hib (Haemophilus Influenzae Type B)</b>			1 dose	1 dose	1 dose	1 dose				
<b>PCV (Pneumococcal)</b>			1 dose	1 dose	1 dose	1 dose				
<b>IPV (Polio)</b>			1 dose	1 dose	1 dose					
<b>Flu (Influenza)</b>						2 doses in first year, then 1 dose annually				
<b>MMR (Measles, Mumps, Rubella)</b>						1 dose				
<b>Varicella (Chickenpox)</b>						1 dose				
<b>HepA (Hepatitis A)</b>						2 doses (between 12 and 24 months)				
<b>Covid-19</b>					As recommended by age group					

**MARIA PARHAM**  
PHYSICIAN PRACTICES

Duke LifePoint Physician Practices

The information contained on this chart is based on CDC guidelines. There may be variations in treatment that your pediatrician may recommend based on individual facts and circumstances.